

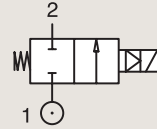
2/2

VALVES FOR DRY OR LUBRICATED AIR, NEUTRAL GASES AND LIQUIDS
PILOT OPERATED

BRASS

PIPE MOUNTING

NORMALLY CLOSED



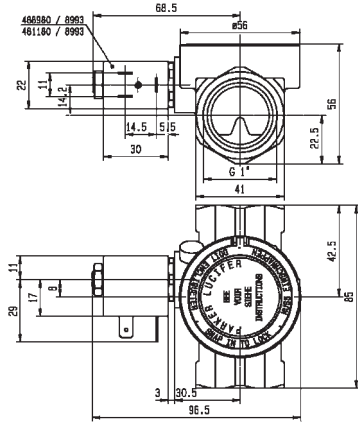
| Port size (BSP) | Orifice Ø mm | Flow factors | | | Operating Pressure Differential | | | Fluid Temp. | | Seat Seal | Valve Ref. | Housing Ref. | Coil Ref. | IS | Power | | Coil Group | Dwg. No. |
|--------------------|--------------------|--------------|-------------------------|-------------------------|---------------------------------|---------------------|--------|-------------|-----------|-----------|-----------------------|--------------|-----------|----|---------|-------------|------------|----------|
| | | Kv l/min | KV m ³ /h | Qn m ³ /h | Min bar | Max(MOPD) AC bar | DC bar | Min °C | Max °C | | | | | | AC W | DC W | | |
| | | | | | | | | | | | | | | | | | | |
| 1" | 18 | 110 | 6.6 | 10150 | 0.3 | 10 | 10 | -10 | 100 | NBR | 321K37 | 8993 | 481180 | | 4 | 5 | 1.1 | 7098 |
| | 18 | 110 | 6.6 | 10150 | 0.3 | 10 | 7 | -10 | 75 | NBR | 321K37 | 8993 | 488980 | | 2 | 2.5 | 1.1 | 7098 |
| | 18 | 110 | 6.6 | 10150 | 0.3 | 10 | 10 | -10 | 100 | FKM | 321K3706 | 8993 | 481180 | | 4 | 5 | 1.1 | 7098 |
| | 18 | 110 | 6.6 | 10150 | 0.3 | 10 | 7 | -10 | 75 | FKM | 321K3706 | 8993 | 488980 | | 2 | 2.5 | 1.1 | 7098 |
| | 25 | 185 | 11.1 | 14100 | 0.3 | - | 10 | -10 | 55 | NBR | 321G3790 ₁ | 2995 | 48358001 | * | - | 0.5- 3 | 7.0/8.0 | 3442 |
| | 25 | 185 | 11.1 | 14100 | 0.3 | - | 10 | -10 | 75 | NBR | 321G3790 ₁ | - | 495910 | * | - | 0.3- 1.2 | 7.0/8.0 | 3442 |
| | 25 | 180 | 10.8 | 14000 | 0.3 | 16 | 16 | -10 | 100 | NBR | E321G37 | 2995 | 481865 | | 8 | 9 | 2.0 | 3442 |
| | 25 | 180 | 10.8 | 14000 | 0.3 | 16 | 16 | -10 | 100 | NBR | E321G37 | 4270 | 481000 | | 8 | 8 | 2.0 | 3442 |
| | 25 | 180 | 10.8 | 14000 | 0.3 | 16 | 16 | -10 | 100 | FKM | E321G3706 | 2995 | 481865 | | 8 | 9 | 2.0/14.1 | 3442 |
| | 25 | 180 | 10.8 | 14000 | 0.3 | 16 | 16 | -10 | 120 | FKM | E321G3706 | 4270 | 481000 | | 8 | 8 | 2.0/14.1 | 3442 |
| 1 1/4" | 28 | 270 | 16.2 | 18000 | 0.3 | 16 | 16 | -10 | 100 | NBR | E321G38 | 2995 | 481865 | | 8 | 9 | 2.0 | 3442 |
| | 28 | 270 | 16.2 | 18000 | 0.3 | 16 | 16 | -10 | 100 | NBR | E321G38 | 4270 | 481000 | | 8 | 8 | 2.0 | 3442 |
| | 28 | 270 | 16.2 | 18000 | 0.3 | 16 | 16 | -10 | 100 | FKM | E321G3806 | 2995 | 481865 | | 8 | 9 | 2.0 | 3442 |
| | 28 | 270 | 16.2 | 18000 | 0.3 | 16 | 16 | -10 | 120 | FKM | E321G3806 | 4270 | 481000 | | 8 | 8 | 2.0 | 3442 |
| | 28 | 270 | 16.2 | 18000 | 0.3 | 16 | 16 | -10 | 100 | FKM | E321G3806 | 4270 | 486265 | | 14 | 14 | 2.0 | 3442 |

Notes:

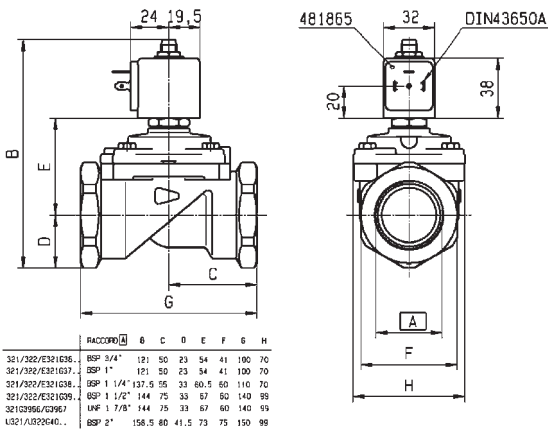
1. Pilot seat disc in FKM



| For this page | Port size | Orifice (mm) | Kv (l/min) | MOPD (bar) | Fluid Temp (°C) |
|---------------|-----------|--------------|------------|------------|-----------------|
| From | 1" | 18 | 110 | 7 | -10 |
| To | 1 1/4" | 28 | 270 | 16 | 120 |



Drawing 7098



Drawing 3442